

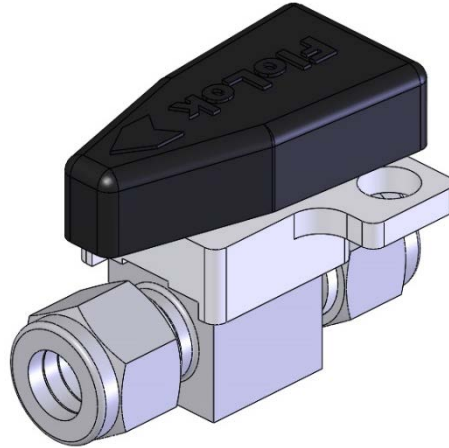
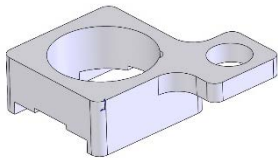
Installation Instructions

Plug Valve Locking Kit



Contents:

- Installation Instructions
- Locking Device

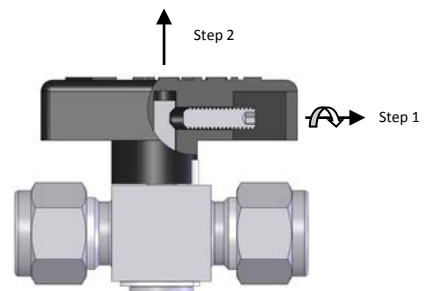


Tools Required:

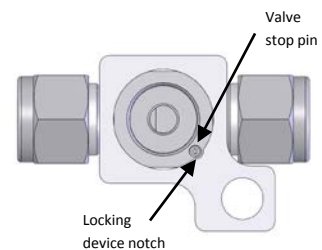
- 3/32" hex wrench

Instructions:

1. Loosen handle set screw using 3/32" hex wrench.
2. Remove handle from valve.



3. Place locking device on valve. Orient locking device notch with valve stop pin as shown.



4. Replace valve handle and tighten handle set screw.
5. Test valve for proper operation.



WARNING:

If the valve is disconnected from a system for installation, it must be depressurized, cycled, and purged.



WARNING:

To be used with padlock shackle diameters of 1/4 in. to 5/16 in. only.